

# **St Andrew's & All Saints**



## **Annual Review 2017**



# Contents

Introduction from the Rector & Emerging Vision.....	3
<b>Growing Deeper</b>	
Overview of Services.....	4
Community Groups .....	6
Ladies and Men's Ministries .....	6
LICC Whole Life Discipleship Training .....	7
Occasional Offices .....	7
Prayer .....	8
<b>Growing Stronger</b>	
Treasurer's Reports.....	9
PCC Reports .....	11
Safeguarding .....	12
Church Fabric / Buildings .....	12
Fellowship / Shared lunches .....	13
Deanery Synod Report .....	14
Churches Together in Malvern .....	14
<b>Growing Younger</b>	
Tums to Tots, Little Treasures and Toddlers.....	15
Care for the Family's Time Out for Parents .....	15
Messy Church.....	16
Explore@4 .....	16
School Links and iSingPOP .....	17
Children's Groups.....	18
Youth Groups and Spring into Life .....	19
Holiday Club .....	20
Light Party .....	21
Young Adults.....	21
<b>Growing Outwards</b>	
Alpha .....	23
Octagon Ministries .....	23
Holiday at Home .....	24
Songs of Praise at Storer Court.....	25
Divorce Recovery Workshops.....	25
St Andrew's Church Centre and Users.....	26
Our Mission Partners & Giving .....	27
Fairtrade .....	28
Lyttelton Well .....	28
Foodbank.....	29
The Bridge Training and Development .....	29
Guy Crumpler .....	29
Wells Club and Village Fete .....	30
All Saints and St Andrew's Accounts Summary Pages .....	31

## Rector's Review - 'A new kind of Well'

*"I just wonder whether God is calling this team of churches to become a 'new kind of well', or to rediscover in a deeper way what it is to be a well of the presence of God in this community - to be the kind of community in, and then through, which streams of living water flow. And for you to be confident afresh, that you offer out the water of life, that that is better than any other water – better that you can get from any other spa or any other well. And to trust that as you, as a community, press into the presence of God, and trust in the power of God, that through you, the presence of God will leak all around you; that people will experience what the woman at the well experienced, which is a kingdom that includes the excluded, that forgives the unforgivable, washes clean the dirty, and gives life to the hungry and the thirsty."*



This was the prophetic word that Rich Johnson gave us back in February at our joint service, which has been such a key focus for us this year as we have prayed into God's vision for us at St Andrew's and All Saints. The calling to be a 'well of the water of life' for our communities is such an inspiring picture of what we are here to be and in this Annual Review there are many, many exciting stories of how that is being lived out – through the Octagon, the Bridge, the parenting courses, our children, youth and schools' work, Holiday@Home to name just a few. But as the prophetic word reminds us, it is only as we 'press into the presence of God' that we will see this fully realised which is why our worship and our discipleship are so key if we are to fulfil that calling.

This year we have produced a joint annual review for St Andrew's and All Saints which highlights the even closer connection that we are making between our two churches and our vision to become 'one church with two worship centres.' It has been encouraging to see different ways in which we are supporting each other and ministering together, most noticeably through our new joint services – DEEPER and Explore@4 - the appointment of Helen as our new Children and Families Ministry Leader, and closer working relationships between the two PCCs.

The new joint mission statement which the PCCs agreed in the Autumn highlights our key purpose and priorities if we are to truly be a 'Well of the presence of God' in our communities:

- Encountering Jesus in Worship, Prayer, Word and Spirit
- Growing whole-life, life-long disciples
- Seeing lives transformed and communities flourish as we demonstrate and proclaim God's Kingdom.

It is such a privilege to journey with you all as we seek to partner with God in the flourishing of our communities and I would like to say, along with the wardens and PCCs a very big thank you all of you who serve, pray, minister and give to this exciting work. We have seen many examples of lives transformed over this last year, of people growing in their faith and being released into their callings, and we pray that God will continue growing us deeper, younger, stronger and outwards in the coming year as we continue to seek his vision and direction.

**Dave**

## **Growing Deeper...**

**Growing whole-life, life-long disciples.**



## **Overview of Services**

### **Morning services at St Andrew's and All Saints**

We continue to offer a variety of styles services across the parish in both of our churches on a Sunday morning:

#### **8:45am Traditional Services**

Our traditional early services continue to be greatly appreciated by a faithful group of people who enjoy the more structured liturgy and traditional hymns (and particularly the organ at All Saints) of the 8:45am service. It has been good to see some new people join our congregations this year and sadly we have had one or two faithful stalwarts pass away during the year too.

The early service is a friendly and caring community who enjoy their fellowship after the service. Great pastoral support, love and care is provided by the McCarthys at St Andrew's and the Burtons at All Saints and their fantastic teams who serve so faithfully.

After significant consultation, from September we had to move to alternating Holy Communion services between the two churches due to restrictions over communion by extension, a change which has not been easy, but graciously accepted by all.

#### **10:30am Contemporary Services**

Our contemporary services in both churches continue to be very popular, with the congregation at St Andrew's in particular continuing to grow where we now often will have 100-120 adults and 30-40 young people on a Sunday morning.

Our great team of preachers and service leaders have continued to open God's Word to us and help us apply the scriptures to our everyday lives. This year we have had a particular focus on discipleship which began with a key sermon series at the start of the year on 'The

Rhythms of Grace.’ We are extremely grateful for our talented musicians, technicians and all who serve us in so many different ways to make these services happen.

It has been good to begin to come together on occasions this year for several joint services, including a very special confirmation service led by Bishop Graham in May. In addition, this year we have had two ‘Seminar Sundays’ where, instead of having a single sermon, several members of the congregation have offered different seminars, giving people the choice of which to attend. Our highlight at All Saints this year at the 10:30 was the full immersion baptism of four young people, which was a very special and joyful occasion.



## **DEEPER**

In January 2017 we began our new team-wide evening service, DEEPER, which quickly found its home at All Saints. DEEPER regularly draws about 60 people from across the three churches. The format is deliberately more ‘spacious’ in every way, allowing room for extended musical worship and teaching combined with a variety of ways in which people are enabled to respond to God’s work in their lives. Many people have found the opportunity for more leisurely prayer ministry a blessing. Others have found the freedom to move or to kneel at the altar a helpful response. There have also been opportunities to respond through art, both in using paintings to inspire and creating our own art as our response to God. The ‘freedom’ and ‘space’ of the DEEPER gatherings have been widely appreciated and we hope to build on this in the coming year.

## **Dave**



# Community Groups

Community groups have flourished in 2017. In addition to the seven existing groups, three new groups have started. One is led by James and June Smith on a Tuesday evening and there are two early morning groups for working men and working women, led respectively by Dave and Alice Bruce. All of the groups play a vital part in the life of the church and reflect our core values. The groups are all different in character; some have a strong emphasis on discipleship, some have a more significant bible study component, some have more emphasis on nurturing, but every group includes all three elements.

Being part of a group supports each of us to grow deeper in our relationship with God as we seek to become whole-life, lifelong disciples. The groups are a place for prayer and for pastoral care and are an excellent place to deepen our relationships with each other, to care for one another and to share the highs and lows of our lives together. Groups also look for ways to reach out to family, friends, colleagues to share the good news of the gospel with them.

**Val Fane – community group co-ordinator**

## Chase Team Ladies Ministries

It's always a special time when ladies from the three churches get together and build friendships at our various events whether it be light-hearted Social events or 'Quiet Days' where we draw closer and deepen our relationship with Jesus

At our Social events this year we invited friends to join us for a Cream Tea in a beautiful garden with a talk on Art therapy.



Then, at a later date we enjoyed a 'Clothes Swap' evening with Prosecco and Canapes followed by choosing a new wardrobe from wonderful clothes donated by our church ladies.

Our Saturday 'Ladies Lunches' (1-3pm) are always popular with a delicious meal followed by an interesting talk.

We held 'Quiet' Days (10am - 4pm) and launched our 'Quiet Half Days' (9.30am – 1pm) which comprise worship, stillness, quiet space, bible reflection and prayer. These events are open to all ladies in the area who may be interested.

**Helen Simpson**

## **Men's Ministry**

The Men's ministry has had a couple of events this year, which have included the Iron Man day in Hereford in October - a well-attended event that included a hearty breakfast a good talk and worship. In November we had our first men's breakfast with nearly 20 squeezed into Poolbrook Café. We hope to add a few more events this year and if anyone has any ideas or things they'd like to do, then please let us know.

**Kevin Surridge**

## **LICC Whole life discipleship training**

How can we as a church grow as a community of people who help one another live out their whole lives – at home, work, church, in the neighbourhood – as disciples of Jesus?

This is a question that we have been looking at through the Malvern-wide LICC whole life discipleship workshops which started in September. St Andrew's and All Saints have partnered with six other churches across Malvern to meet monthly on Sunday evening to be trained by Stefan McNally of the London Institute of Contemporary Christianity to learn how we can become a more effective disciple-making community.



**Dave**



## **Occasional Offices**

Occasional offices continue to be a really important way of serving our local community and of making



connections with people in our parish that we would not otherwise be in contact with.



During 2017, we conducted 30 funerals across our churches and it has been encouraging to connect up with several of these families in different ways after the funerals have taken place. We also had two St Andrew's weddings and two All Saints Weddings, (3 of which were joyful occasions involving our own church family) and 8 baptisms, including the special baptism of the Luce family at a great celebratory service at All Saints.

**Dave**

## Prayer

Prayer is central to our church life with weekly prayer meetings held at both churches and an opportunity to receive prayer at the end of our morning services and at our 'Deeper' monthly evening services.

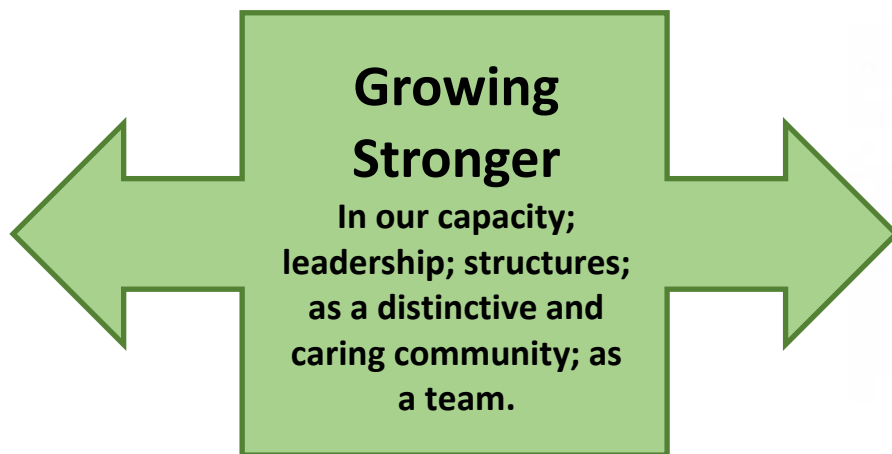
We have a prayer chain where prayer requests are emailed almost daily and answers to prayers frequently shared, testifying to the faithful commitment of many who pray and intercede regularly.

This year again, we joined with churches around the country to be part of the 'Thy Kingdom Come' prayer initiative. A Prayer room was set up at St Andrew's and was open daily culminating in a 48-hour weekend where it was continuously occupied by individuals,

families, groups and children's groups and ended at the Pentecost 'Deeper' service on the Sunday evening at All Saints.

These are all valuable times for building faith, fellowship and discipleship and provide an opportunity to rejoice together in answers to prayer. **Helen Simpson**





## Treasurer's Reports

### All Saints

For 2017, we forecast a £4,000 excess of expenditure over income on unrestricted funds. We actually finished the year with an excess of income over expenditure of £3,300 for which we praise the Lord! We have yet to give away about £1,530 of our planned charitable donations so the true figure is closer to £1,770. Income from giving was up substantially from 2016 due to a few one-off donations as well as increased regular donations. Overall expenditure ran pretty much to plan with utility bills significantly lower than expected and Mission and Pastoral costs much higher than expected. If we are to overspend in any area, this would be the one I would choose!! We paid our Parish Share in full again. In 2018, we will have increased staff costs for our youth and children's ministry and the parish share has increased by £3,000 so the budget is forecasting a deficit of £7,000.

**Paul Southern**

### St Andrew's

During the year 2017 the church received voluntary (undesigned) gifts of almost £109,500 on which it was able to reclaim a vitally important almost £19,500 of Gift Aid. Once other income is included (for example, income from lettings of the Church Centre) we received a total income of almost £162,000. This included just over £12,800 as restricted gifts towards the costs of more staff working to support our young people's activities, and designated gifts of a little more than £2,000 (including Gift Aid) towards the rest of the costs for the replacement of our boilers that occurred in March 2017. This represents a significant

increase compared to 2016, where total incoming resources totalled almost £114,000 - an almost 42% increase year on year.

Of this income we spent just over £125,000 on church activities, including fully repaying £24,000 of the remaining loan on the roof, three years earlier than we had previously planned to so do, and the provision of £65,000 as Parish Share to support clergy costs and the wider Diocese's work (representing 100% of the requested sums). This total also includes giving away more than £12,000 to the various missions we support as a church in the UK and beyond, exceeding the minimum target set by the PCC of 10% of our voluntary income per year. Compared to 2016, the total expenditure represents an increase in costs of 28%.

Overall, this means the net funds belonging to the church grew over the year by just over £36,500 to a total of just over £56,000. Now the church has repaid the loan in full, these funds are fully available to support future church activities. This represents a 'buffer' of more than 5 months of the 2017 costs of the church, and exceeds the PCC's target reserves policy of holding £20,000 in reserves.

On behalf of the PCC, I want to express many thanks for your very significant giving to God's work at St Andrew's Church this year. We plan during the next year to both grow the staff considerably compared to the start of 2017, and the range of activities we undertake. Therefore, this extra income will be applied to deliver more of what we believe God is calling us to do for him in the parish, in Malvern, across the UK and internationally.

I also wish to offer thanks to the other members of the Finance team who support the smooth running of the church's finances - Trish Gorton (bookkeeper), Valerie Jamieson (planned giving and git aid) and new to the team this year, Chris Hopes (cash management).

The full accounts are available to anyone who wishes to see them.

**Andy Lymer**

# **PCC Reports**

## **All Saints**

Having welcomed several new members onto our PCC at the last APCM, we have met 8 times throughout the year, including 3 jointly with St Andrew's.

Meetings have addressed many practical matters including new hymn books, new chairs with arms, improvement to the church grounds and improvements and repairs to the building too.

Other less practical, but equally important discussion topics have included service patterns, new staffing possibilities, the safeguarding of our congregations and leaders and the new data protection regulations coming into force in May. In a move to bring our two PCCs together, strategic groups covering the 4 'growing vision' areas and composed of St Andrew's and All Saints' PCC members have met for the first time to establish priorities for the coming year. Hopefully, there will be more on this next time.

## **Sarah Yeadon**

## **St Andrew's**

So much has been included in each of the PCC meetings over the past year that it has been ambitious to cover all agenda items whilst keeping to the planned finishing time. This reflects a busy year across St Andrew's and All Saints as ways of working more effectively together, including more opportunities for the two PCCs to meet jointly, have been explored and implemented to our mutual benefit. As well as gathering in the church immediately before PCC meetings to reflect on God's word and pray, we often pause for prayer in our discussions either seeking our Lord's guidance on particular issues or thanking him for his amazing provision for us. In addition to standing agenda items such as the reports from the Churchwardens and on Safeguarding, Finances and Buildings, our discussions have ranged from changes in service patterns to the recruitment of staff - all requiring careful and prayerful consideration. We have continued the practice of dividing into small groups for topics that need to be explored more deeply, thus enabling everyone to participate. Information on the main topics of discussion and the decisions made by the PCC are published on the church notice sheet following each meeting.

## **Jean McCarthy**

# Safeguarding



The PCCs are aware of their duty to have due regard to House of Bishops' guidance on safeguarding children and vulnerable adults. In 2017, the PCCs used the "Safeguarding Toolkit" provided by the Diocese as a way of self-assessment to ensure it fulfils that duty. We will be using the same process this year. We have updated our 'Safer Recruiting Strategy' to comply fully with current regulations. In 2017 and into 2018, the safeguarding procedures have been updated significantly. We have added a new policy to cover Domestic Abuse and now have new procedures for new Youth Leader applications, new Octagon Helper applications, working with vulnerable adults, responding to domestic abuse and new Holiday Club leader or helper applications. Also, recruitment packs have been produced.

We now complete our DBS checking on-line (paper versions are still, currently, available).

A C1 safeguarding training event was held at St Andrew's as we have so many people working in this area and another is planned for July 2018.

The St Andrew's and All Saints' Safeguarding Team has met 3 or 4 times in 2017 and have made several major decisions which help to protect our congregation.

The challenge for this year is to comply with new Data Protection regulation.

**Bob Gibson**

## Church Fabric / Buildings

**All Saints**

We had a Quinquennial Inspection in 2017 which usually sets the Wardens' knees trembling! However, I am pleased to report that there were no major problems reported. We do have a few minor issues that need attention and we should consider implementing a more rigorous maintenance plan to keep on top of the buildings and grounds. As ever with buildings, preventative maintenance is often money well spent to prevent big repair costs later on. We do need willing bodies to help keep the fabric in order so if you can assist, please let me or one of the wardens know and support the occasional working party.

**Paul Southern**



## **St Andrew's**

Keeping the church centre in good operating order is an ongoing process and making sure that everything (electrical, mechanical, lighting, structural, keys, etc.) is working all the time for all users of the church centre creates real challenges, but most of the time we (hopefully) succeed. In addition we are up to date with all the required testing and maintenance, e.g. electrical and fire.

Main developments have included replacing the heating boilers, pumps and control system, the move of the Chase Team Office into Chase End Room in the church centre, uncovering the source of the problem causing the leaks in the corridor ceiling in the church centre, the replacement of the roof lights in the church with LED strip lights, the repair of the front door hinge, the installation of a new illuminated cross on the west end of the church and the pollarding of the trees and bushes to the north of the church.

Thank you to all those who have helped and contributed during the year to keeping our great church centre going – it's great. If you would like to help in any way, please let me know.

Thanks also to the small team of techies who look after the audio, video, EasyWorship, PowerPoint and lighting in the church (and elsewhere in the church centre) and provide technical support for all services, practices and events. This year we have trained up some new recruits but we would welcome more.

**Derek Barnes**

## **All Saints' Fellowship Lunches**

Our "Bring and Share" lunch continues to be popular and well attended. We attract around 30 people each month, from both congregations, who enjoy a sociable time over an enjoyable meal. As ever the quality and variety of food continues to impress!

The team effort of setting up and clearing up works well, and I thank all those who help in this and the taking of dirty dishes and tablecloths away to be washed, cleaned and returned.

**Trish Beecroft**

## St Andrew's Shared Lunches

There are so many people who serve drinks and make food either regularly or for one-off events. The events covered include drinks after services, shared lunches, harvest supper and harvest tea, thanksgiving tea and Community Action Christmas tea. Add to this those who cook and bake for Holiday@Home events, youth events and meet and greet suppers plus those who provide sleeping accommodation for visitors and you have a wonderful picture of those who serve by being great hosts.



**Angela Gibson**

## Deanery Synod

Angela Davidson and I are your two representatives at Deanery meetings from All Saints and Jennifer Oakley is your representative from St Andrew's.

In 2017 we had a talk from Revd. Ruth Walker and her project Kingdom People. She brought with her Amy, a young Missionary (now called 'Missionary Enabler') who was interviewed about her work in Bromsgrove. She finds working in schools welcoming and does a lot of one to one contact with young people. Another evening we had Rev. Hugh Burton, the Diocesan Eco Adviser who talked about green issues and encourage us to use our sphere of influence, look at our lifestyles, campaigns, partner with others to achieve changes and consider how we use resources in our church life. Some suggested that green issues should feature in questions at visitation. Our representative at General Synod also reports back to us and covers many things that the newspapers cover, including the issue of food poverty, a social justice issue.

**Bea Magowan**

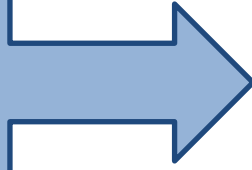
## Churches Together in Malvern

During the past year, Dan Bennett, Pastor of 'The Source', has become the dynamic new Chairman of CTM, which meets three times a year, bringing together representatives of the churches to share and plan joint events, and receive briefings about local initiatives such as Swap and Share, Dementia Awareness and Malvern Welcomes. We are always looking for new ways of serving and witnessing to the local community. One constant is the united Good Friday service in the Priory grounds next to Church Street, preceded by processions of witness from different parts of Malvern.

**Heather Williamson**

## Growing Younger

Reaching, nurturing and  
equipping and releasing  
new generations  
(0-30s)



## Tums to Tots, All Saints Toddlers and Little Treasures

Across All Saints and St. Andrew's there is a wonderful team of approximately 20 church members who between them are currently organising and running 3 toddler groups, Tums to Tots, All Saints Toddlers and Little Treasures, all of which aim to meet the needs of families in both the local and wider communities by offering a safe, non-judgemental, fun-filled space away from the chaos and busyness of everyday life. Little Treasures and Tums to Tots have both celebrated their 1st Birthday this year and are growing in numbers, whilst All Saints Toddlers is about to celebrate its 5th Birthday.

*'I have been coming to toddlers for over 2 years now, I first walked in with a 6 week old who was suffering from reflux and wasn't sleeping. As soon as I walked in I felt welcomed and supported, that group truly saved me from going stir crazy, I don't know how I would have coped in those early days without that support.'* Toddler Mum

*'Friendly, welcoming, a safe space to turn up and feel like you belong.'* Toddler Mum

In the summer all three groups came together to enjoy a day out to a local farm park and was enjoyed by over 30 families whilst Christmas brought a special visitor who stopped off at Little Treasures and Toddlers to deliver some gifts.

**Vanessa Everitt**

## Care for the Family's Time Out for Parents

Over the past year St Andrew's and All Saints have started running Care for the Family's Time Out for Parents sessions for families within the local community and further afield who have children aged between 5 and 11. Although there are week by week subjects to cover, it is parent-led with the majority of learning coming from shared experiences. So far two, six-week sessions have been completed with 9 families participating. Because of the amount of interest and positive feedback further sessions have now been organised.

**Vanessa Everitt**

# Messy Church



Each month we welcome families into All Saints for a time of activities, stories, crafts, worship and creative prayer followed by a meal



together, usually jacket potatoes, cake and fruit! We have talked about Loving God, our neighbours and the world and some of the fruits of the Spirit, including Kindness, Joy and Peace. Over 60 different families joined us at Messy Church in 2017 (many are non-church families) with a regular group of around 10 families who attend most months. A grandma, who comes to Messy Church regularly, says *"It's the highlight of my month, there is something for everyone here."*

**Margaret Buchanan & Helen Attree**

## Explore@4

Explore@4 is an exciting new venture particularly aimed at young families. Someone has described it as "Church ... but not as you know it". We meet at 4pm on the Second Sunday of each month at All Saints and have a variety of activities centred around a Bible story with a chance to explore and reflect on the themes in informal and practical ways followed by a sandwich tea. It is a really exciting time as we continue to reach out to the schools and other young families in the local community. The Lord has blessed us so far and we look forward to how Explore@4 develops over the coming year.

Explore@4  
Church...but not as you know it

**Chris Mesley**



## School Links



We thank God for the continuing openness of the schools in Malvern who warmly receive groups to lead Collective Worship each week. We have used the new material produced by OTB, which links the stories to 'Values' adopted by many schools. Our Christmas Puppet presentation entitled 'The Donkey's Tale' was a great success, despite the snow preventing some performances. The Wyche and Malvern Wells schools regularly use All Saints Church for their celebrations of

Christian festivals. Again this year Messy Church ran an activity at The Wyche Christmas Fayre, where we were able to personally invite Families to the Christingle and Messy Christmas. The Priory welcomed over 600 primary school children to Lifepath week in June, involving a large team of volunteers from across the churches. Holly Mount ran very successful Seeds for Life days in the summer term.

**Margaret Buchanan**

## iSingPOP

One of the very special occasions this year at both churches was the iSingPOP concerts. iSingPOP is a primary school music project that brings together school, church and community. Children are taught pop worship songs in school by very enthusiastic members of the iSingPOP team. They then have the chance to record their own



album and at the end of the week, perform concerts to parents in the local church. In March, All Saints hosted the Wyche and Malvern Wells schools and in November St Andrew's hosted Malvern Parish School for two amazing concerts which brought many families into our churches from the community.

**Dave**



# Children at St Andrew's

## Creche, Bubbles & Splash

There are three groups for younger children at St Andrew's on Sunday mornings: the Crèche for 0 – 3 years, Bubbles for 3 – 5 years and Splash for 5 – 7 years. There are a great team of leaders for both Splash and Bubbles; the sessions are fun, creative and interactive. Together they have been discovering how much God loves them, learning to pray together and exploring stories from the Bible. Splash uses Urban Saints materials and Bubbles uses Scripture Union. Children in the crèche play with a variety of toys usually looked after by one of their parents. Thanks must go to Lorna who has organised the crèche for the last few years.

**Helen Attree**



## Xtreme (Key Stage 2)

We regularly have about 8 or 9 children in Extreme. They are a bright and enthusiastic group, who are up for the challenge of being salt and light on their front lines. We use the Urban Saints resources which suit the energy levels and interests of the children (and leaders) well. It is a privilege to work with such great kids. We currently have two leaders. One more would be nice.

**Sue Hornby**

## Pathfinders

Pathfinders has been amazing this year. We have got a wonderful group of young people and they have just risen to all Mark, Lisa and I have thrown at them. Lisa and I went on a brilliant day of training with the Vineyard Church in Worcester. We took away that, instead of organising the session too tightly, we needed to make space for the Holy Spirit. This is frightening sometimes (to this leader) but the kids are learning to listen to the Holy Spirit and the young people constantly amaze me- writing a prayer for the main Church this weekend that talked of how they cannot be "Salt and Light" at school on their own but need to call up the "Holy Spirit". They just get it- and are awesome young Christians! We are delighted that some will be baptised in March and thanks also to Lisa for starting a mentoring programme for girls in Pathfinders and Chaos. Bless them all, this year has been a privilege for the 3 of us.

**Simon McCaulay**

## **Chaos**

CHAOS has had a year of settling in and growing in confidence and faith. No members have moved on and two have joined the group, both new to the church. It's been really inspiring to see how they are all growing in their faith and the confidence to talk about it.

There is still only one leader. On weeks when I am not around, CHAOS join the church service. It would be a real help to the group to have another leader to help them grow their faith.

**Neil Hornby**

## **Children at All Saints**

We have been a small group, but we still had great time discovering how much God loves us! Following the same programme as the adults has been a challenge but we have learnt so much over the year through games, quizzes, crafts, reading the Bible and discovering creative ways to pray!

**Helen Attree**

## **Youth at All Saints**

This year has seen some changes in the group. In September we prayed with Dan as he went off to Warwick University to study Physics; but rather than the group shrinking, we welcomed Naomi and Joe into the group. Having an injection of youthful enthusiasm is always great and Sunday mornings can now get quite lively (and Fred now has a rival for who can eat most bourbon biscuits). Apart from the biscuit eating, we have been looking at Fruitfulness on the Frontline. Patience and Self-control seem to be our most challenging areas and understanding how we can all be Christians on our frontlines has been great. Modern life and school can provide some challenges for young Christians and we have explored ways of exhibiting the fruits of the spirit and living out our faith at school and home. As ever, we would love to grow our leadership to give the young people some different viewpoints and make sure we can put on more sessions and activities.

**Andy Green**

## **Youth Mentoring**

There is a total of 8 girls who are receiving group and 1-1 mentoring sessions. Their growth as individuals of learning the word and applying this has been encouraging to see. Together as a group they have learnt to support one another sharing their current walk with God, offering different views and growing in confidence to pray for each other, accepting their identity as daughters of God.

**Lisa O'Kane**

# Youth Link and Spring into Life

During 2017/2018 there have been 5 Youth Link Events and 12 smaller gatherings designed to provide a space for Young People to go deeper into themes discussed during our main events. This has been the first year that Youth Link has taken responsibility for delivering One Missions Week (formerly Spring into Life). During the week local teams delivered sessions to over

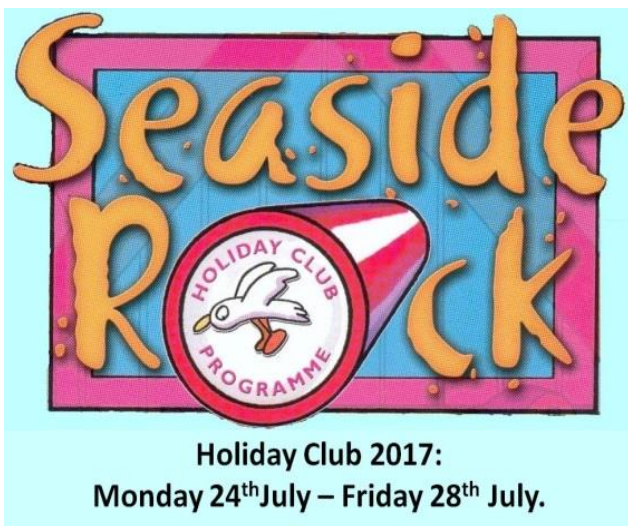


500 young people at both The Chase and Dyson Perrins High School. The week also included the development of a Family Fun Day at Great Malvern Priory and a Special One Youth Link event which was opened up to young people from across the diocese.

A full annual report was presented to Churches Together in Malvern on 26th January detailing our recent activities and developments. The report set out a vision for future structure of the Project and made suggestions as to how local churches can support Youth Link on an ongoing basis. Copies of this report are available upon request by emailing [james.williams@ymcaworcestershire.org.uk](mailto:james.williams@ymcaworcestershire.org.uk)

**James Williams**

## Holiday Club



In July around 100 children (many who aren't regular church attenders) enjoyed a week of activities at Seaside Rock! Looking at the ups and downs of Peter's friendship with Jesus through stories, games, crafts, Bible discovery time and prayer activities, we discovered what it means to be a follower of Jesus. Lifeguards, Diane Hancock and Dave Bruce, led us through each morning and an amazing team of adults and teenagers ensured the club ran to an excellent standard as usual! Each day after the club, the teenage helpers met

together with Dave for Young Leader training as they ate lunch together!

**Diane Hancock and Helen Attree**

# Light Party

The church was decked out with a multitude of fairy lights and pumpkins carved in crosses and with smiling faces on Tuesday 31st October as we celebrated our alternative Halloween event. The Light Party was attended by about thirty primary school aged children. At the party we played giant glow-in-the-dark balloon volleyball in the church before the children chose activities from science experiments with fire, making glass lanterns, or more whacky games involving consuming lots of sugar! Some of our fantastic teenagers came as helpers and some shared their testimony about why they choose to celebrate God's light rather than darkness at Halloween. We ended the evening in a darkened church, with all of the children sitting in a giant circle holding glow-sticks praying for God's light in their lives and in the lives of those that they love. It was a great evening.

**Alice Bruce**

## Young Adults (20s and 30s)

According to recent research, those aged 20 to 30 were the least likely age group to be present within the life of a local church. Although, in recent months there have been a number of newcomers to church within this age group it is still one of the smallest demographics within our community. Much prayer and innovation are needed to effectively connect with Young



Adults outside of St Andrew's and All Saints, however, I am pleased to report that the work amongst young adults has grown from strength to strength in 2017/2018.

We have a regular home group meeting through which we have been able to develop a genuine sense of community. In our meetings we have cultivated a desire to bring the things we face before God and each other. We share our lives, our joys and sorrows, celebrations and heartaches and entrust them to God hearing from his word, interceding for each other and praying for God's will to unfold in each of our lives.

There are three key areas that we would like to ask you to pray into as we continue to journey together as a community group. Firstly, that we would increasingly find ways of serving within the wider church community, as God develops his gifting within our lives. Secondly, that we would continue to fill in the gaps of our faith, as we learn and discover God's will for our lives through his word, and finally, that we would continue to be strengthened as a community.

**Sarah and James McCarten- Williams**



**Growing Outwards...**  
Bringing holistic  
transformation and life to our  
communities and beyond.



## Alpha

Alpha was a key feature of the summer term with the corridors of St Andrew's on Wednesday nights full of the smells of delicious food provided by Angela and her volunteers for the 20 or so participants on the central course. The brand new Alpha film series was used which stimulated much discussion



and many moved on in their faith journey through the sessions. At the away day held at the Lyttelton Well, the five other community groups doing Alpha joined in and we had a special time of teaching on the Holy Spirit, worship, ministry and more great food!

**Dave**

## Octagon Ministries



The weekly 'Coffee Shop' continues to provide a cafe with a difference in the community living near the Octagon. Sandwiches, baked potatoes and toast are always on the menu along with a warm welcome and commitment to live the life of Jesus in everything we do at the cafe.

We still have a lot to learn about being a fresh expression of church and nurturing discipleship in this setting but nevertheless through the cafe, T@10 (the group that gathers together at start of Coffee Shop to be still in God's presence, pray and reflect on a Bible passage) and Coffee Shop Community Group are developing the holy habits that Luke depicts in Acts 2: biblical teaching, fellowship, breaking bread, prayer, giving, service, eating together, gladness and generosity, worship and making more disciples.

Over 2017/18 we celebrated the festivals at Coffee Shop: Easter, Harvest, Remembrance, Christmas along with celebrating God's Amazing Love around Valentine's Day. We also gave out mince pies and hot chocolate on the streets by the Octagon at our Christmas celebration and encouraged people to pop in.

We continue to pray for the flourishing of our local community and for discernment on how to engage more effectively with that community.



**Geraldine Foster**

## Holiday at Home



A St Patrick's Day lunch kicked our year off. The church was decorated in all shades of green and we enjoyed the usual freshly cooked meal and a quiz. In May, following a lovely tea with all our favourite sandwiches and cakes, we were in good voice for Janet's sing-along in celebration of Vera

Lynn's 100th Birthday. Unlike previous years, our summer activities and outings were spread across the summer rather than being held in one August week. Thank you to all who gave us feed-back which will help in planning for 2018. In June our guest speaker was Gill Hales who brought along her 'rescue owls' and even allowed those brave enough to touch them. Our mystery tour took us out in the beautiful countryside of the Three

Counties. In July the fish & chip lunch on the River Severn's 'Spirit of Freedom' was as popular as ever and August's outing to the Safari Park (with lunchboxes of lots of lovely goodies) was a real treat. A traditional Christmas lunch, with hand bell ringers to entertain, completed the year. Please contact Shaun McCarthy or Patience Broad if you'd like to be involved in Holiday @ Home 2018.

**Patience Broad & Shaun McCarthy**

## **Songs of Praise at Storer Court**



Month by month a small team from St Andrew's meets familiar and new faces of the residential home in Barnard's Green. Together we spend a half hour singing familiar hymns interlaced with a short Bible reading, reflection and prayer. But most appreciated is the time afterwards, chatting and sharing troubles and joys over the inevitable cup of tea.

**Peter Foster**

## **Divorce Recovery Workshop – Malvern**

Anyone who has been through the heartache of an irretrievable breakup of a long-term relationship is welcome at DRW. The breakdown of such a relationship is a form of bereavement, yet unlike the death of a spouse, often little support is available.

DRW is a national registered, not for profit charity. It is not about conversion to any faith or a dating agency. The course consists of 6 sessions:

- Is this really happening to me?
- Coping with your "Ex"
- Assuming new responsibilities
- Family matters
- Letting go and forgiveness
- Thinking about new relationships



Participants watch a DVD on each topic and then divide into small groups with 2 facilitators per group to help them talk through their issues. Everything said in the group is strictly confidential.

There is a charge of £60 to attend the whole workshop (6 sessions). Participants are given printed notes to take home.

Participants are then invited to join the Malvern DRW Social Group. This provides a source of new friends who understand what you have been through and offers on-going support. For more information please contact Gill Owen

Tel: 01684 560394

[Malvern@drw.org.uk](mailto:Malvern@drw.org.uk)

[www.drw.org.uk](http://www.drw.org.uk)

**Gill Owen**

## **St Andrew's Centre & Users**

The Church centre continues to be used by various groups with an average of over 50 lettings a week.

In the past 12 months we've welcomed Severn Belles, and U3A learn music, U3A keep fit, U3A Cryptic Crosswords, My Baby can Dance and Amelia's Theatre club!

We continue to explore ways in which we might be a 'blessing' to those in our community who use the centre and so we have provided easy chairs, a coffee machine and created a more relaxed atmosphere. A couple of volunteers have also started offering on-site hospitality to one regular group.

Plans for the coming year include a screen advertising church and centre-related activities.

Thanks, as ever, go to our enthusiastic centre manager Doug and to Kelly who keeps the place looking so good.

**Barry Austin**

# Our Mission Partners

## All Saints

Each year, All Saints plans to give away 10% of the previous year's income, split roughly 50:50 between the UK and abroad. For 2017, the away giving budget was £5,760 of which we paid out £4,231 as follows:-

<b>Lyttelton Well</b>	<b>£1,002</b>	<b>CMS (Peru)</b>	<b>£1,002</b>
<b>Brook Farm Community Trust</b>	<b>£500</b>	<b>Bible Society</b>	<b>£1,002</b>
<b>Guy Crumpler</b>	<b>£450</b>	<b>Lisa O'Kane</b>	<b>£275</b>

The remaining donations of £725 to Lisa O'Kane and £804 to Jon & Elise Fletcher in Thailand will be paid early in 2018. Lisa and Jon & Elise became new mission partners this year to replace the Zephaniah Trust, who were a one-off beneficiary in 2017, and the Dyson Perrin's Chaplaincy Project, which is now fully funded from other sources.

We also gave away an unplanned £433, some of which was money collected for specific causes e.g. Macmillan Coffee Morning. In addition, we donated £300 each to the Wells and Wyche Primary schools towards their ISingPop costs.

## Paul Southern

## St Andrew's

The PCC has largely met the target to give 10% of our income to mission work outside the parish; the majority has been divided equally between five main recipients. See Finance summary for details.

Our support to Bible Society is channelled to the work of Mike Bassous in the Lebanon, bringing Christian compassion to refugees. Our link through the Church Mission Society supports Ben and Katy Ray's leadership of Neema Crafts in Tanzania. They are providing over 100 disabled people with the opportunity to live a fulfilled life and to have the dignity associated with paid employment, so transforming the local attitudes to those living with disability. We now have a new link in Thailand with John & Elise Fletcher and their children Elliot and Sammy. They are friends of Dave and Alice from Shrewsbury, who moved to Bangkok in 2014 with Urban Neighbours of Hope to live in the Klong Toey Slum, sharing God's love and their lives with those living in extreme poverty. They will be visiting us to talk about their work in August 2018.

A little nearer home, we support the Church Army work of Nick Russell, who serves some of the most deprived people in our own land in the Greenwich area. Nearer still, the Bridge



Training and Development provides an outstanding opportunity for those who have not fitted well into main-stream education. This work is led by St Andrew's members Neil and Sue Hornby and has significant involvement from many in our fellowship. We have also sponsored a number of individuals in their service or developmental study. Finally, child sponsorship through Siloam Christian Ministries and Compassion UK is specifically linked to our various children's and young people's groups.

**Nick Fane**

## **Fairtrade**

*To quote its website, "Traidcraft, founded on Christian principles, sells the best of fair trade, runs life-changing development projects and campaigns hard to bring about trade justice."*

Fairtrade has been part of life at St Andrew's and All Saints for many years and both churches offer a monthly opportunity to purchase Traidcraft products.

At St Andrew's, Shaun O'Boyle has recently marked the end of his mobile service; he estimates that he has sold between £20-25,000 between his different venues! He continues to offer his stall at St Mary's on Monday mornings as well as an annual Big Breakfast which certainly sets you up for the day ☺. In his place, a big welcome to Caroline Smith as she brings her Traidcraft wares to St Andrew's on the 3rd Sunday of the month.

Similarly at All Saints, Janet Simmonds has been running a Traidcraft stall for many years and thanks everyone who supports the stall; ginger biscuits and all kinds of chocolates go down very well and the beautiful hand-made cards are very popular and admired.

Please browse and buy while enjoying the Fairtrade tea and coffee after services. Orders can also be placed by contacting Caroline or Janet in between times.

**Mary Flynn & Janet Simmonds**

## **Malvern-wide initiatives:**

### **Lyttelton Well**

Praise God for this Christian presence in the centre of Great Malvern, supporting the work of and supported by all the churches in Malvern. The demand for professional counselling is growing and we provide that at no cost to the clients (though many donate to the work). The bookshop and café with the chaplaincy service remain popular. Do use them!

**Peter Buchanan**

## **Foodbank**

Many thanks to all those who support this work through time, goods or money. Your generosity has ensured that we are never short of supplies to meet the needs in our area and signpost clients to the other assistance they may need.

**Peter Buchanan**

## **The Bridge Training and Development**

This has been another exciting year at the Bridge. We were pleased to receive an Ofsted grade of outstanding in the summer, an encouraging accolade for all the hard work that staff and volunteers put in. We have been oversubscribed since then.

An exciting new development for September is a Business Centre which we are planning to be in Barnard's Green. This will have 3-4 businesses which our 16-18 year olds can work alongside. An opportunity to enable them to acquire the skills they will need to move into employment.

We are really grateful to St Andrew's for all their prayers, practical and financial support.

**Neil Hornby**

## **Guy Crumpler's Trip to Israel**

In November of last year, as part of my placement with the Diocese of Europe, I went on a pilgrimage and educational trip to see the Holy Land for six days. This trip was significant to me as it brought Bible stories to life and it helped me to have a deeper understanding of Jesus' life, both spiritual and human.

I was able to see the many issues surrounding Israel and Palestine. I went on an alternative political tour. Plus I was also able to attend a service in a Reformed Synagogue and share a meal with a Jewish family who attended the Synagogue. This was significant to me as it enabled me to understand a political problem in a more detail along with the understanding of a different culture and religion to that of my own.

I met many important figures such as the Head of the Greek Orthodox Church and the Anglican Bishop of Jerusalem. I was able to visit many amazing place like the Western Wall, the Temple Mount, The Holy Sepulchre, the Palace of the Head of the Greek Orthodox, Church, The Mount of Olives and the Church of Mary Magdalene in Jerusalem.

We went to Bethlehem to see the birthplace of Christ in the Church of the Nativity along

with the Chapel of the Milk Grotto, and saw the hillside where the shepherds worked. We went to Jericho and saw the wilderness which Jesus stayed in for his 40 day and nights along with collecting water from the River Jordan. We also visited places such as Masada, the Ein Gedi Oasis and the site of the Dead Sea Scrolls as well as swimming in the Dead Sea itself. We also had a very moving visit to the Holocaust Museums.

I will never forget my time to Israel. It was such a life-changing experience and I have felt the growth in my spirit and as a person because of it.

**Guy Crumpler – Pastoral Assistant, Church of England in Bruges**

## **Wells Club Mission & Village fete**

### **The Wells Club**

All Saints members continue to lead the management team of the Club, providing the Chairman and Treasurer of the Club Committee. The Club remains profitable, with adequate reserves, in an economic and social climate in which many pubs and clubs are closing down permanently.

About twenty All Saints members are members of the Club, and they usually make up a third of the participants in the fortnightly quiz nights, where there is a diverse mix of church and non- church participants, giving the opportunity for outreach by socialising.

Some men from the church continue to meet on the first Thursday of the month for sociable chat and snooker.

### **Malvern Wells Village Fete**

The weather was not kind and numbers were down, but the afternoon went well with Messy Church, Toddler Group and other aspects of All Saints being shown to the public at large. The Messy tent was as popular as ever, with a steady flow of children taking part in the activities.

We raised the profile of the Toddler and Tums to Mums groups and also promoted the Craft group. In addition we provided a quiet space with seating for anyone wanting a chat about our church activities. A number of interesting and worthwhile conversations took place in and around our three tents.

**Ken Beecroft**

# ALL SAINTS CHURCH, MALVERN WELLS & WYCHE FINANCIAL STATEMENTS FOR THE YEAR 2017

*Approved by the PCC on 15th March and signed on their behalf by Dave Bruce*

RECEIPTS AND PAYMENTS ACCOUNT	Unrestricted Funds £	Restricted Funds £	Total 2017 £	Total 2016 £
<b>Receipts:</b>				
Voluntary receipts:				
Regular Giving	45,716		45,716	39,715
Planned giving	1,590		1,590	1,225
Collections other than giving	2,773		2,773	2,363
Income Tax recovered	11,081		11,081	11,724
<b>Sub-total</b>	<b>61,160</b>		<b>61,160</b>	<b>55,027</b>
Other voluntary receipts	426	200	626	722
Receipts from Church Activities	2,253	6,374	8,627	8,654
Investment income	759		759	652
<b>Total</b>	<b>64,598</b>	<b>6,574</b>	<b>71,172</b>	<b>65,055</b>
<b>Payments</b>				
Church Activities:				
Away giving to charities	4,664	300	4,964	6,130
Diocesan parish share	37,417	-	37,417	37,409
Tostevins' leaving gift				580
Church running expenses	19,194	5,079	24,273	17,690
<b>Total</b>	<b>61,275</b>	<b>5,379</b>	<b>66,654</b>	<b>61,809</b>
Excess of Receipts over Payments	3,323	1,195	4,518	3,246
Transfers between funds	-	-	-	-
<b>Total</b>	<b>3,323</b>	<b>1,195</b>	<b>4,518</b>	<b>3,246</b>

**BANK ACCOUNT RECONCILIATION**

Bank current and deposit accounts at 1 <sup>st</sup> January	25,584	22,338
Bank current and deposit accounts at 31 <sup>st</sup> December	30,102	25,584
<b>Change</b>	<b>4,518</b>	<b>3,246</b>

**STATEMENT OF ASSETS AND  
LIABILITIES****Cash Funds**

Bank current account	18,262	13,778
CBF deposit fund	11,840	11,806
<b>Total</b>	<b>30,102</b>	<b>25,584</b>

**Investment Assets**

1364 CBF Church of England Investment Fund Shares at market value	<b>22,362</b>	<b>20,510</b>
--	---------------	---------------

**Liabilities**

- -



PAROCHIAL CHURCH COUNCIL OF ST ANDREW'S, MALVERN							
STATEMENT OF FINANCIAL ACTIVITIES							
for the year ended 31st December 2017							
		Unrestricted Funds	Designated Funds	Restricted Funds	Endowment Funds	Total Funds 2017	Total Funds 2016
Note		£	£	£	£	£	£
	<b>Incoming Resources</b>						
2a	Voluntary income	115,678.13	189.62	12,815.00	-	128,682.75	79,323
2b	Income from investments	177.08	-	-	-	177.08	77
2c	Church activities	24,828.50	2,345.00	-	-	27,173.50	30,290
2d	Other incoming resources	4,934.67	758.44	-	-	5,693.11	4,213
	<b>Total Incoming Resources</b>	<b>145,618.38</b>	<b>3,293.06</b>	<b>12,815.00</b>	<b>-</b>	<b>161,726.44</b>	<b>113,903</b>
					-		
	<b>Resources Expended</b>				-		
3a	Church activities	119,637.98	5,377.46	-	-	125,015.44	97,692
3b	Governance costs	-	-	-	-	-	-
	<b>Total Resources Expended</b>	<b>119,637.98</b>	<b>5,377.46</b>	<b>-</b>	<b>-</b>	<b>125,015.44</b>	<b>97,692</b>
					-		
	<b>Net incoming resources before other recognised gains and losses</b>	<b>25,980.40</b>	<b>- 2,084.40</b>	<b>12,815.00</b>	<b>-</b>	<b>36,711.00</b>	<b>16,211</b>
5b	Revaluation of investment assets	-	-	-	103.16	103.16	114
9	Transfer between General & Church Hall funds	9,447.17	- 9,447.17	-	-	-	-
9	Transfers between General & Capital Projects Funds	- 20,573.50	20,573.50	-	-	-	-
10		-	-	-	-	-	-
	<b>Net incoming resources after other recognised gains and losses</b>	<b>14,854.07</b>	<b>9,041.93</b>	<b>12,815.00</b>	<b>103.16</b>	<b>36,814.16</b>	<b>16,326</b>
	BALANCE brought forward	28,922.06	- 9,041.93	1,771.31	1,142.81	22,794.25	6,469
	BALANCE carried forward	43,776.13	-	14,586.31	1,245.97	59,608.41	22,794

STATEMENT OF FINANCIAL POSITION									
for the year ended 31st December 2017									
		Unrestricted Funds	Designated Funds	Restricted Funds	Endowment Funds	Total Funds 2017		Total Funds 2016	
Note									
		£	£	£	£	£		£	
	NON-CURRENT ASSETS								
5a	Tangible non-current assets	2,252.00	-	-	-	2,252.00		2.00	
5b	Investments				1,245.97	1,245.97		1,142.81	
		2,252.00	-	-	1,245.97	3,497.97		1,144.81	
	CURRENT ASSETS								
6	Accounts Receivable	2,156.62		-	-	2,156.62		3,132.13	
	Short term deposits	9,371.86	-	-	-	9,371.86		9,345.56	
	Cash at bank and in hand	30,067.07	-	14,586.31	-	44,653.38		33,398.16	
		41,595.55	-	14,586.31	-	56,181.86		45,875.85	
	LIABILITIES								
7	Accounts payable: amounts falling due in one year	71.42	-	-	-	71.42		6,226.41	
	NET CURRENT ASSETS	41,524.13	-	14,586.31	-	56,110.44		39,649.44	
8	Accounts payable : amounts falling due in more than one year	-	-	-	-	-		18,000.00	
	NET ASSETS	43,776.13	-	14,586.31	1,245.97	59,608.41		22,794.25	
	PARISH FUNDS								
	Unrestricted	43,776.13	-	-	-	43,776.13		28,922.06	
9	Designated	-	-	-	-	-		- 9,041.93	
10	Restricted	-	-	14,586.31	-	14,586.31		1,771.31	
5b	Endowment	-	-	-	1,245.97	1,245.97		1,142.81	
		43,776.13	-	14,586.31	1,245.97	59,608.41		22,794.25	

[www.standrewsandallsaints.org](http://www.standrewsandallsaints.org)



[@standrewsandallsaints](https://www.facebook.com/standrewsandallsaints)



[@StAandASmalvern](https://twitter.com/StAandASmalvern)